

**LIVING AT  
THE HIGHEST  
LEVEL**

**HENNINGER  
TURM  
FRANKFURT**



# LIVING AT THE HIGHEST LEVEL

## HENNINGER TURM FRANKFURT

The Henninger Tower is a landmark of Frankfurt's popular Sachsenhausen district and is known far beyond the borders of the metropolitan region. Built in 1961, the original tower was demolished in 2013 to the regret of many Frankfurt residents. The former 119.5-metre-high building of Henninger-Bräu AG consisted of a grain silo and a revolving restaurant with an observation tower.

The new Henninger Tower with a height of 140 metres was built on the same site between 2014 and 2017. The architecture is structurally based on the original. The new tower is a residential tower with 209 luxury flats. On the top floor there is a restaurant and a publicly accessible visitors' terrace from which you can look out over the Frankfurt skyline.

### PROJECT OVERVIEW :

► APPROX. 4,000M<sup>2</sup>

REGUFOAM SOUND 10

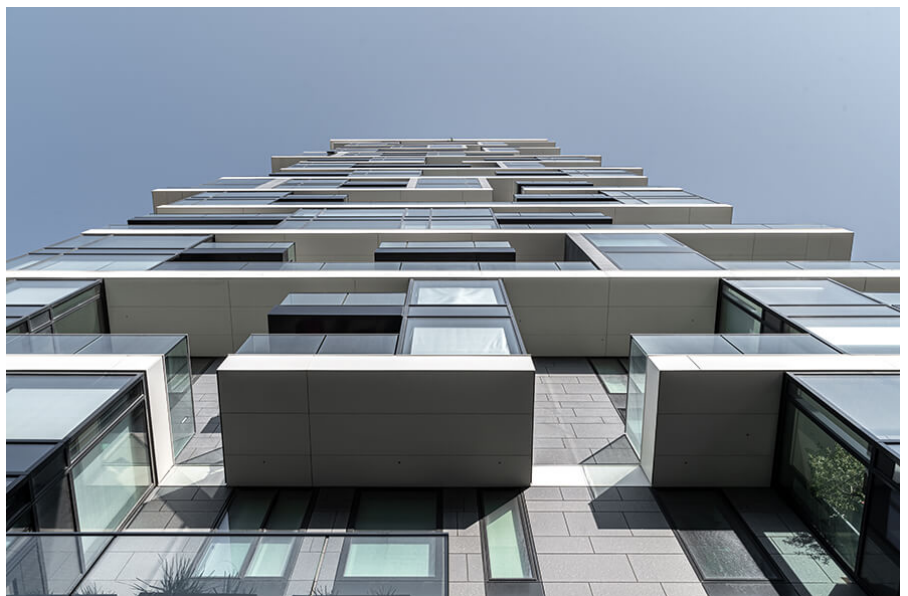
► 209 LUXURY FLATS

► LANDMARK OF

FRANKFURT

SACHSENHAUSEN

► REGUFOAM SOUND 10





# LUXURY FLATS WITH A UNIQUE SKYLINE VIEW

Since its renovation, the Henninger Tower has become a habitable landmark in Frankfurt. With prices of up to 2.4 million euros for the condominiums, the highest demands of the residents must be satisfied. Risks that reduce the quality of living are undesirable.

In addition to upscale gastronomy, the base of the property complex also houses shopping facilities for neighbourhood supply. The feel-good package is rounded off by a spa area and a roof terrace with pool.

At the same time, the high visitor frequencies as well as the late closing of shops and the demands for exclusive living are by no means contradictory. The engineering office ITA-Ingenieurgesellschaft für Technische Akustik mbH was able to realise impact sound insulation at the very highest level in combination with our sound insulation solutions in the area of the supermarket and restaurant floors.

**REGUOAM sound 10** was installed over a total area of approx. 4,000m<sup>2</sup> under screed, some of which was subject to high loads. The high sound insulation requirements were far exceeded according to a follow-up measurement in a luxury flat directly above the supermarket.